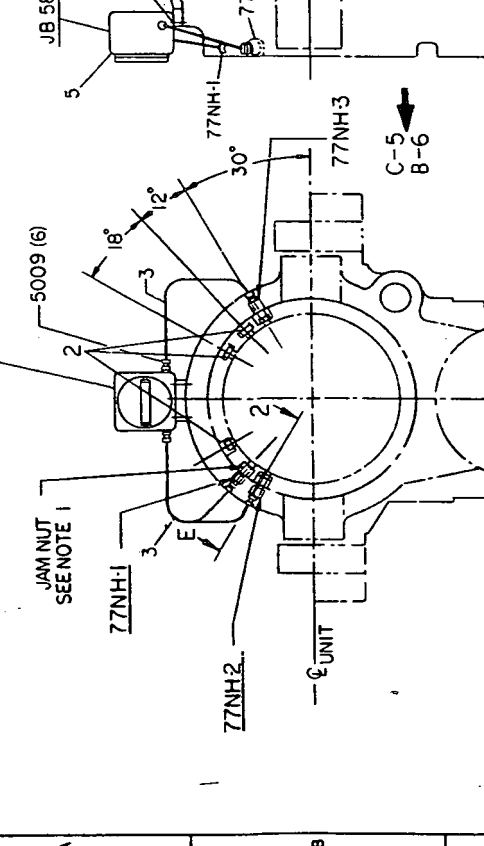
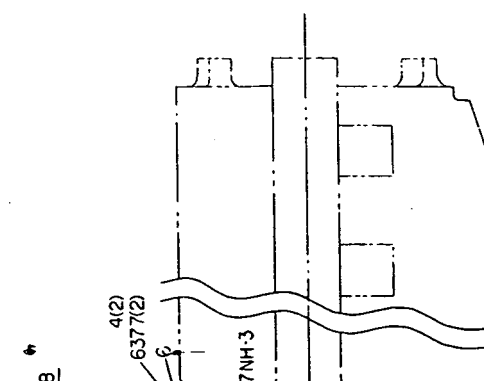
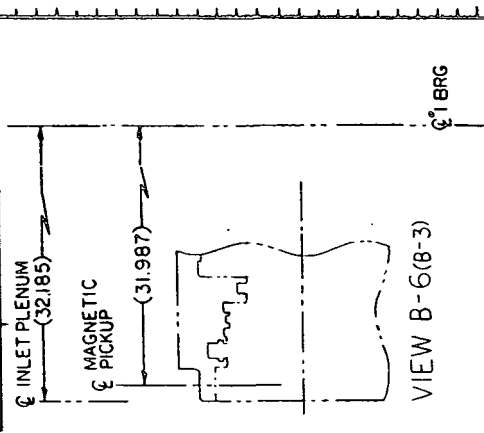


197C3928
 GENERAL ELECTRIC
 PICKUP ARR, MAGNETIC-HP
 FIRST MADE FOR ML 719A1PE1-4
 0346
 PL ISSUED

UNLESS OTHERWISE SPECIFIED USE THE FOLLOWING:

APPLIED PRACTICES	SURFACES	TOLERANCES	FINISHES
SEE ITEM 1	✓	±	±

82662161
 31 JAN 58
 197C3928



- 77NH-1 — JB 58
 - 77NH-2 — JB 58
 - 77NH-3 — JB 58
- CONDUIT SCHEMATIC

NOTE 1: ADJUST AIR GAP BETWEEN MAGNETIC PICKUP AND COUPLING TEETH TO DIMENSION AS SHOWN AND LOCK IN PLACE USING LOCK TITE PT. 3 AND JAM NUT ON MAGNETIC PICKUP. JAM NUT TO BE TORQUED TO 25 FT/LBS MAX.

197C3928
 REV NO

2 INSTR. ASSY - TUBE	215A4435
APPLIED PRACTICE	110270
WORK PROCEDURE	
LIST OF SUPPLEMENTARY DOCUMENTS	
SIMILAR ID: 197C3928	100-0-0-0-0

APPROVED: *H. Arnold*
 DATE: *July 27, 1987*
 197C3928
 GAS TURBINE
 GREENVILLE, SC

REV	DATE	DESCRIPTION

055 GAP SEE NOTE 1
 .045
 3365
 ML ITEM 1313
 SECT E-2(2)

82662161