

216B6355

GENERAL ELECTRIC

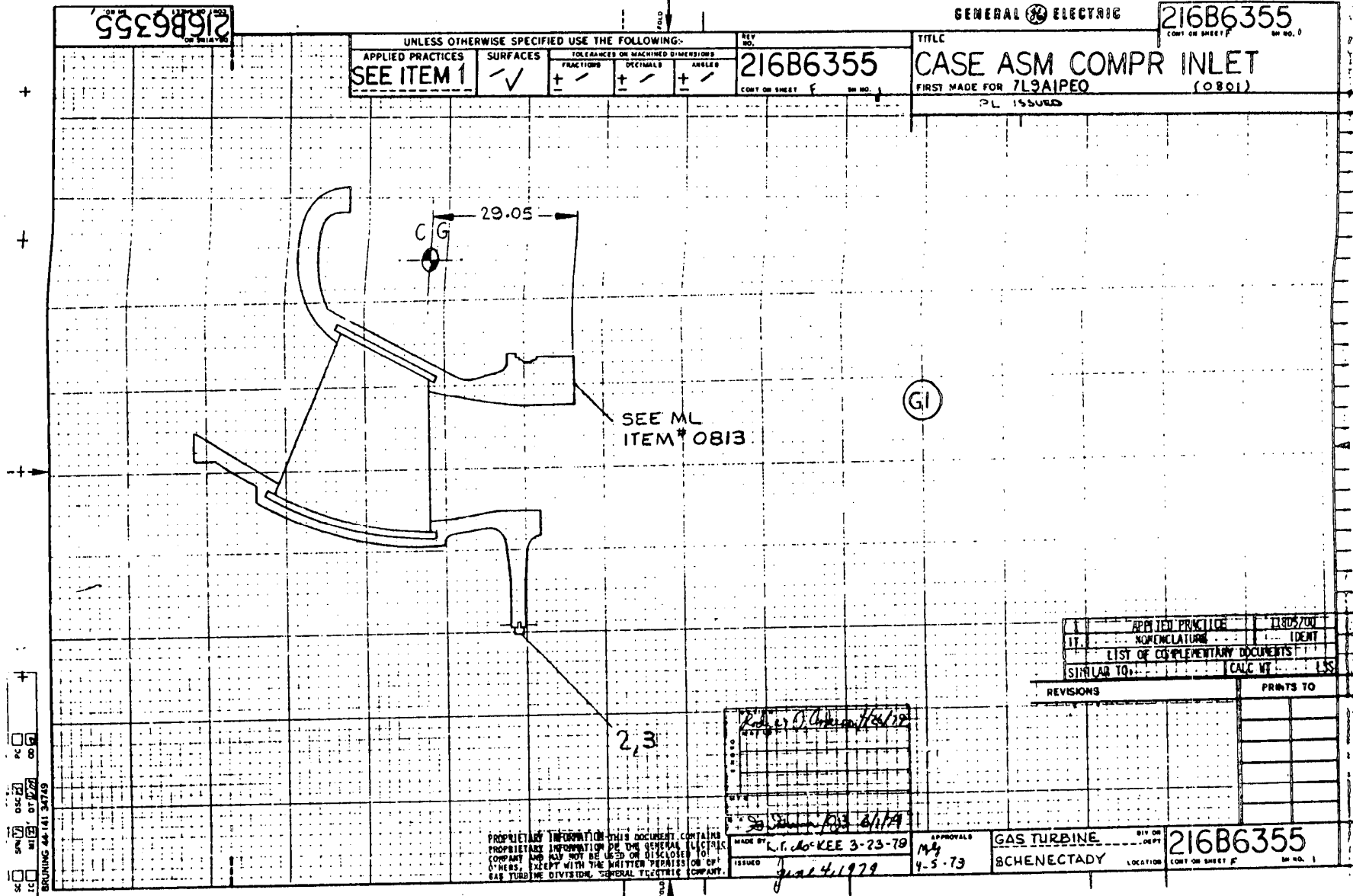
216B6355
CONT. ON SHEET 1

UNLESS OTHERWISE SPECIFIED USE THE FOLLOWING:

APPLIED PRACTICES SEE ITEM 1	SURFACES ✓	TOLERANCES ON MACHINED DIMENSIONS		
		FRACTIONS	DECIMALS	ANGLES
		+	+	+

REV. NO. 216B6355
CONT. ON SHEET 1

TITLE
CASE ASM COMPR INLET
FIRST MADE FOR 7L9A1PE0
PL 155000
(0801)



APPLIED PRACTICE	CLASS/ZONE
IT.	IDENT
LIST OF COMPLEMENTARY DOCUMENTS	
SIMILAR TO:	CALC. VT. ISS.

REVISIONS	PRINTS TO

MADE BY: *R. J. ...*
ISSUED: *Jan 4, 1979*

PROPRIETARY INFORMATION THIS DOCUMENT CONTAINS PROPRIETARY INFORMATION OF THE GENERAL ELECTRIC COMPANY AND SHOULD NOT BE USED OR DISCLOSED TO OTHERS EXCEPT WITH THE WRITTEN PERMISSON OF THE GAS TURBINE DIVISION, GENERAL ELECTRIC COMPANY.

MADE BY: *L. T. DO-KEE 3-23-78*
ISSUED: *Jan 4, 1979*

APPROVALS: *MJ*
4-5-73

GAS TURBINE
BCHENECTADY

216B6355
CONT. ON SHEET 1

MARK