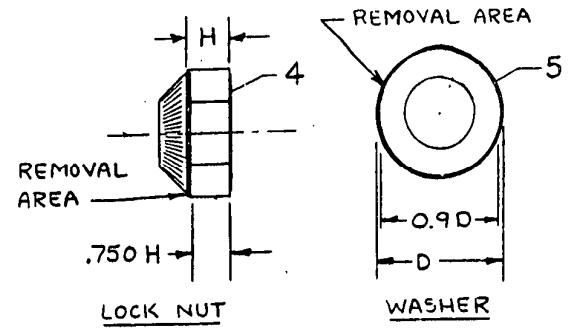
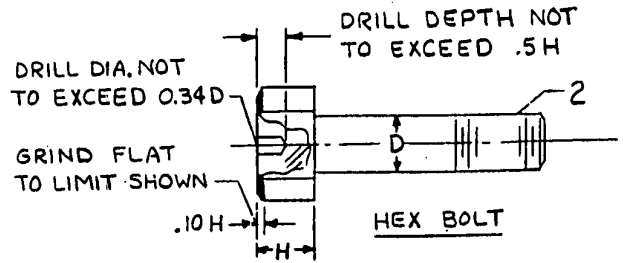
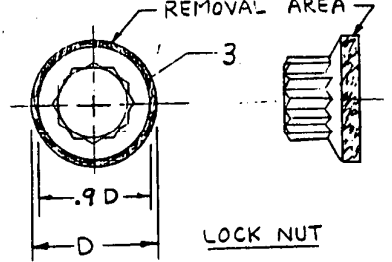
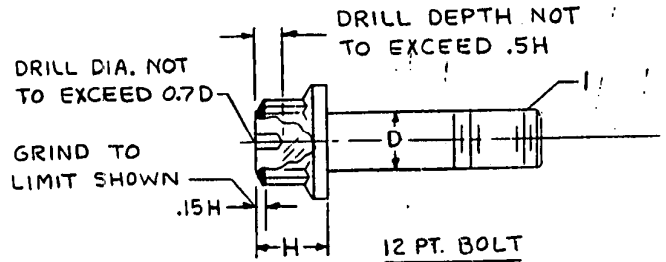


227 B 6112		UNLESS OTHERWISE SPECIFIED USE THE FOLLOWING:			REV NO.	TITLE	
APPLIED PRACTICES	SURFACES	TOLERANCES ON MACHINED DIMENSIONS			227 B 6112	HARDWARE KIT, BALANCED	
118D5700	✓	FRACTIONS	DECIMALS	ANGLES	CONT ON SHEET F	FIRST MADE FOR 7L7A1PBI-36	
		+	+	+	SH NO. 1	1313	
						P.L. ISSUED	



- NOTES:
1. REMOVE MATERIAL AS REQ. FOR BAL. TO EXTENT SHOWN BY SHADED AREAS OR BY DRILLING.
 2. REMOVE ALL BURRS.
 3. CLEAN PARTS FOLLOWING BALANCING
 4. SETS SHALL BE PACKAGED IN A MANNER TO MAINTAIN THE SET.
 5. BALANCE CRITERIA: WEIGHT DIFFERENCE BETWEEN LIGHTEST AND HEAVIEST PARTS IN A SET SHALL NOT EXCEED THE VALUE LISTED

GROUP	NOTE: 5
7-3, 9-12, 16-20	0.2 GRAMS
4-8	0.05 GRAMS
13, 14, 15, 21	0.1 GRAMS
22, 23, 24	0.5 GRAMS

I	APPLIED PRACTICE	118D5700
II	NOMENCLATURE	IDENT
LIST OF COMPLEMENTARY DOCUMENTS		
SIMILAR TO:	CALC WT	LBS

REVISIONS		PRINTS TO	
1	20, 1985		
2	6-10-80		
3	5-19-80		
4	5-19-80		
5	5-19-80		
6	5-19-80		
7	5-19-80		
8	5-19-80		
9	5-19-80		
10	5-19-80		
11	5-19-80		
12	5-19-80		
13	5-19-80		
14	5-19-80		
15	5-19-80		
16	5-19-80		
17	5-19-80		
18	5-19-80		
19	5-19-80		
20	5-19-80		
21	5-19-80		
22	5-19-80		
23	5-19-80		
24	5-19-80		
25	5-19-80		
26	5-19-80		
27	5-19-80		
28	5-19-80		
29	5-19-80		
30	5-19-80		
31	5-19-80		
32	5-19-80		
33	5-19-80		
34	5-19-80		
35	5-19-80		
36	5-19-80		
37	5-19-80		
38	5-19-80		
39	5-19-80		
40	5-19-80		
41	5-19-80		
42	5-19-80		
43	5-19-80		
44	5-19-80		
45	5-19-80		
46	5-19-80		
47	5-19-80		
48	5-19-80		
49	5-19-80		
50	5-19-80		

PROPRIETARY INFORMATION - THIS DOCUMENT CONTAINS PROPRIETARY INFORMATION OF THE GENERAL ELECTRIC COMPANY AND MAY NOT BE USED OR DISCLOSED TO OTHERS, EXCEPT WITH THE WRITTEN PERMISSION OF THE GAS TURBINE DIVISION, GENERAL ELECTRIC COMPANY.

APPROVALS	GAS TURBINE DIV OR DEPT	227 B 6112
RWL	SCHENECTADY LOCATION	CONT ON SHEET F SH NO. 1
ISSUED	June 18, 1980	

3010 VI