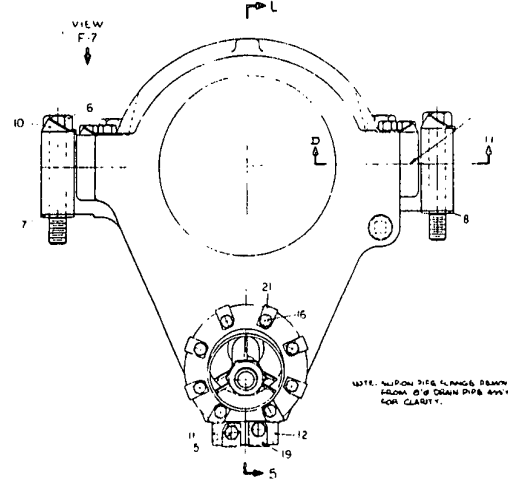
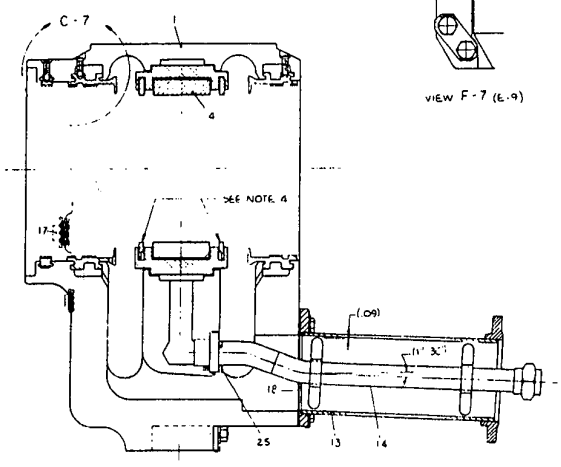
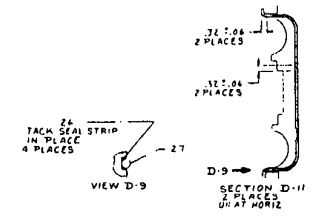
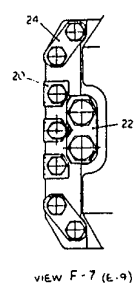
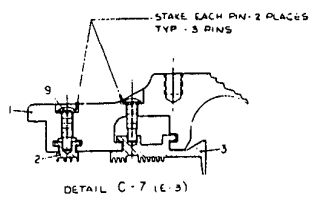


19C326U

GENERAL ELECTRIC 932E341
BEARING ASSEMBLY NO. 3

- NOTES
- 1 TORQUE ALL BOLTS PER ITEM 2
 - 2 ALL JOINTS TO BE OIL TIGHT
 - 3 ALL WELDS PER ITEM 4
 - 4 ASSEMBLE SEAL RINGS WITH OIL DRAIN ON ITS IN LOWER HALF FACING THE $\frac{1}{2}$ OF LINER
 - 5 WELDING WELDS PER ITEM 3 UNLESS OTHERWISE SPECIFIED
 - 6 APPLY RT 25 TO PIPE PLUG INSTEAD OF COMPOUND CALLED FOR PER ITEM 1
 - 7 APPLY SEALANT RT 28 TO HORIZONTAL JOINT, SEALING OUT OIL TO OIL SURFACES



1	INVESTIGATOR	DATE
2	TORQUE	974 A 100
3	APPLIED TORQUE	1108000
4	TEST	
5	TEST	

DESIGN	DATE	BY	CHKD
932E341			
932E341			
932E341			

0744