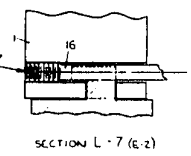
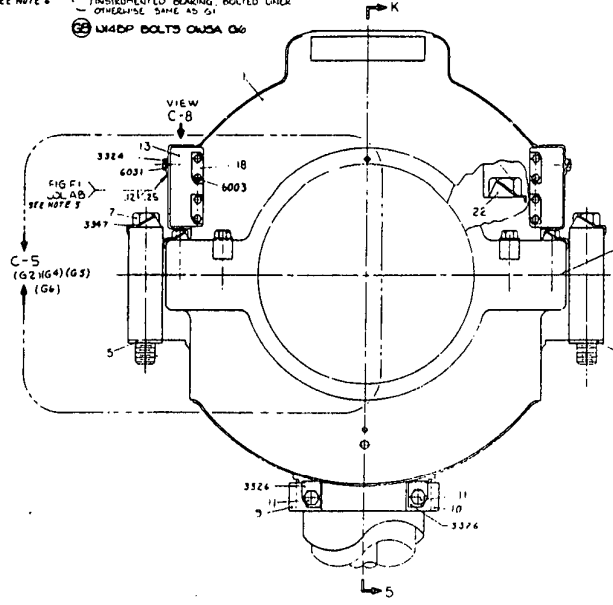
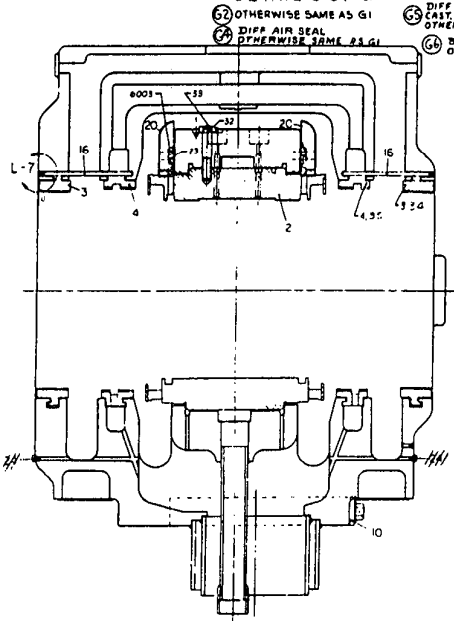
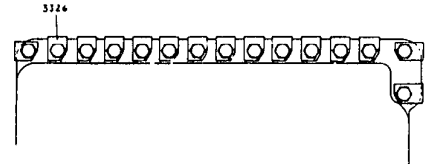
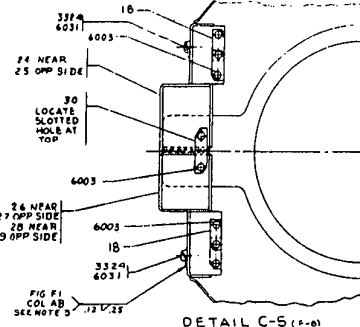


REV	DATE	BY	APP
1			
2			
3			
4			
5			
6			
7			
8			
9			
10			
11			
12			

PRO ITEM 1	2	3	4	5	6	7	8	9	10	11	12

BEARING ASSY 2
REVISED 1953



- NOTES
- 1 ALL WELDS PER ITEM 2 (III)
 - 2 TORQUE PER ITEM 5
 - 3 ALL JOINTS OIL TIGHT
 - 4 ADD 1/16" TO HOLES IN INSULATION PACK
 - 5 WELD ONE CORNER OF PART 3324 TO INSULATION PACK
 - 6 ALL WELDS PER ITEM 2 (III) AND ITEM 4
 - 7 APPLY SEALANT PART 31 TO HORIZONTAL JOINT, SEALING ALL OIL TO AIR SURFACES.

- ① OTHERWISE SAME AS G1
- ② DIFF AIR SEAL & CASEY INSPECT & WELD INSTR SEE NOTE 4 OTHERWISE SAME AS G1
- ③ INSURMENTED BEARING, OILTED LINER OTHERWISE SAME AS G1
- ④ DIFF AIR SEAL OTHERWISE SAME AS G1
- ⑤ BOLTED LINER OTHERWISE SAME AS G1
- ⑥ LWDP BOLTS QWSA 06

ANTI-ROTATION PIN
1 PIN EACH END
2 PINS TOTAL
STAKE EACH PIN
2 PLACES

- ① AS SHOWN EXCEPT AS NOTED
- ② DIFF AIR SEAL OTHERWISE SAME AS G1
- ③ DIFF BOLT P7 QWSA 05
- ④ DIFF PINS P12 QWSA 08
- ⑤ DIFF NUTS, ADD 3 PINS QWSA 01
- ⑥ DIFF 1/8" & P55 QWSA 01

LVA 7

REV	DATE	BY	APP
1			
2			
3			
4			
5			
6			
7			
8			
9			
10			
11			
12			

REV	DATE	BY	APP
1			
2			
3			
4			
5			
6			
7			
8			
9			
10			
11			
12			